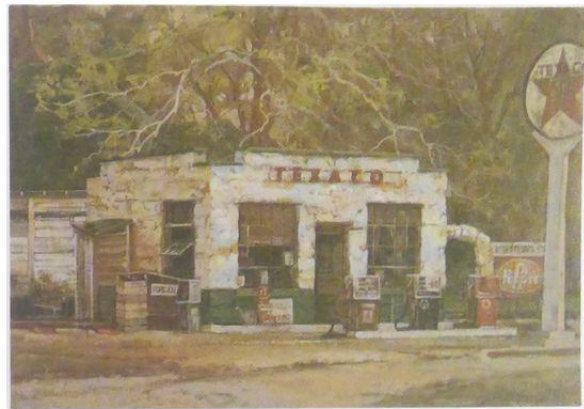
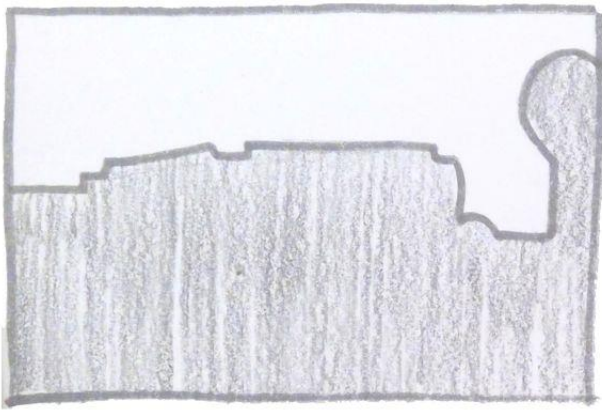


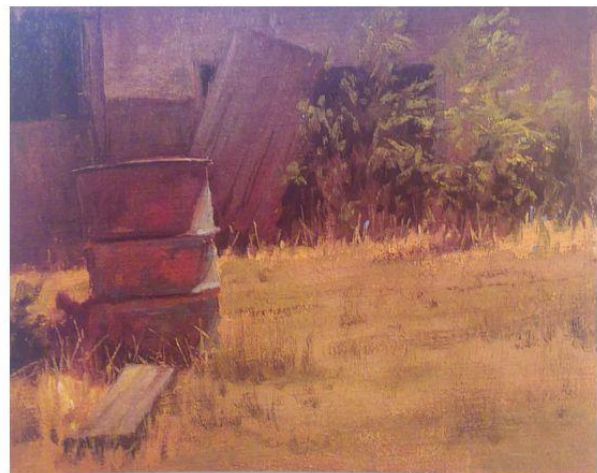
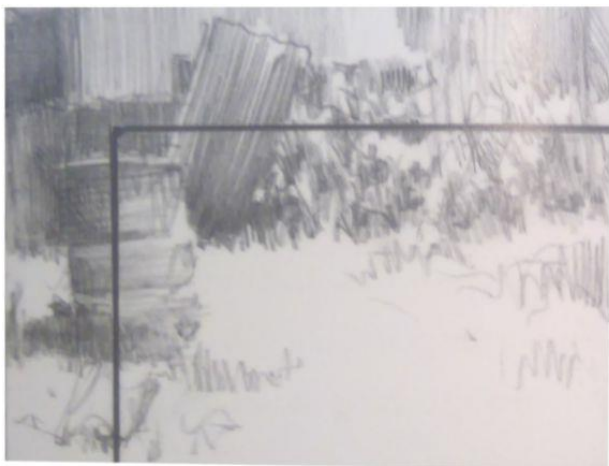


APRIL 2020 – STUDYING COMPOSITION: Armatures: The L Shape

“The L-shape composition is a blocky, bold design created by a large value shape within the painting. In the example here, the L is lying on its back and is created by the line between the dark tree shape pressing against the lighter building-sign-foreground shape. For this design to work, the L and the negative shape created by it must vary in size—one large and one small—creating an interesting abstract pattern. Also, there must be enough local interest—created by texture, line, color, or form—in all parts of the composition to carry the eye from one side of the picture across to the other side. (In *Our New Pumps*, for example, the driveway leads you into the scene from the left and the overhead tree takes you back.) Of course, the L-shape compositional scheme can be used on vertical canvases too.”¹



“With the L, you will find your center of interest usually along one of the arms near the L’s intersection. Both arms of the L should hold less and less attention as they move out toward the edge of the picture plane. You can configure the L four different ways, upside down or back to front.”²



1. [Painting Better Landscapes](#), Margaret Kessler pg 47
2. [Mastering Composition](#), Ian Roberts, pg 20



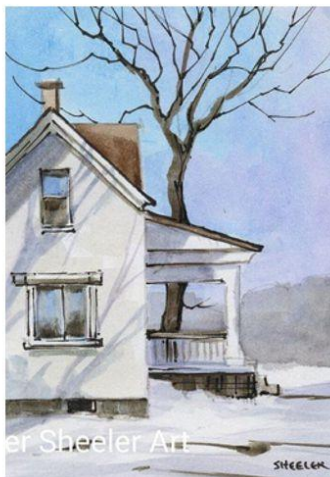
ART CHALLENGE 2020

OTHER EXAMPLES:

One of my favorites is by Deloras Korgel. It was part of the Coffea show, just recently.



These I picked up on Pinterest:



REMEMBER: Look for the division of values. Have fun with this one!

Barbara

1. [Painting Better Landscapes](#), Margaret Kessler pg 47
2. [Mastering Composition](#), Ian Roberts, pg 20